



New Training Paradigm

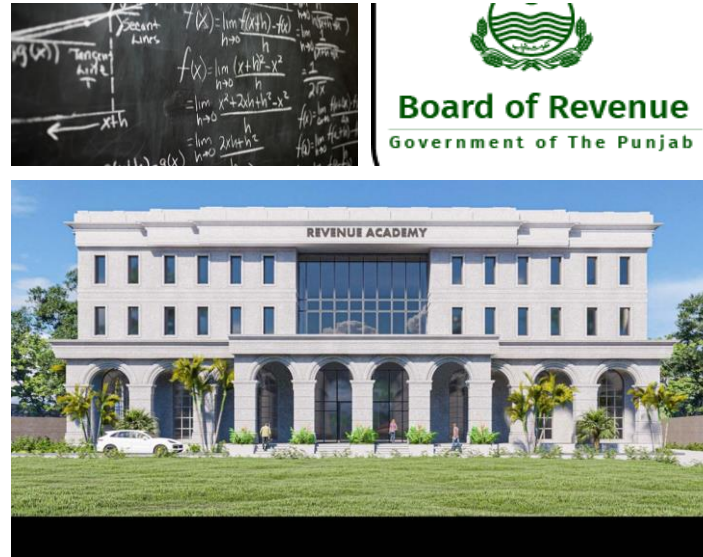
PUNJAB REVENUE ACADEMY,

BOARD OF REVENUE, PUNJAB.



Current Scenario

Board of Revenue Ecosystem





No training institute existed
before 1st of January 2022



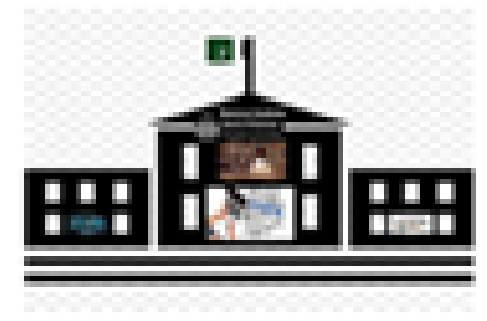
Established on 1st
of January 2022 as
a premium training
institute to cater
for the specialized
training needs of
all tiers of Land
Revenue
Administration



The Punjab Revenue Academy

THE PUNJAB REVENUE ACADEMY, BOR PUNJAB

- ✓ Established as a premium training institute to cater for the **specialized training** needs of **all tiers of Land Revenue Administration Ecosystem**
- ✓ Human Resource Development
- ✓ Course designing & evaluation
- ✓ Business Process Re-engineering (BPR) studies
- ✓ ICT Systems assessments & evaluations
- ✓ System Analyses
- ✓ Solution designing
- ✓ Implementation & deployments



The Punjab Revenue Academy

Human Resource that require training

- 25892 total villages in the Punjab Province
- 8560 Patwaris (4850 newly recruited- currently under training)
- 1500 Girdawars
- 400 Revenue Officers (Naib Tehsildars & Tehsildars)
- 144 Assistant Commissioners (Both PMS & PAS)
- 52 full-fledged Sub-registrars

Cont'd...

- 108 (36x3) (Additional Deputy Commissioners, Deputy Commissioners & General Assistants Revenue)
- 1500 Support Secretariat Staff of AC, DC, Commissioner offices, & BOR Secretariat (850)
- 12 MBRs & allied staff
- 3000 plus staff of PLRA

Shifting sands...

Landholding
fragmentation 42% in
1990- crossed 68% in
2010 (95% now)

Households in the
Punjab 18.33 M/ 110
M Pop.

Rural Households in
the Punjab @
63.29%: 11.6 M

Services sector 60%
of GDP

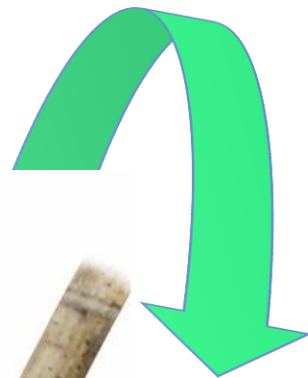
36 % Urban

**Urbanization of
Rural Areas !**

Access to Credit & Vertical Market Linkages

**89% livestock Farmers
are Landless**

***Share
In Agri
Credit's
Consumption***



7%

Livestock

share in
Agri
sector
GDP
58.3%

- **Access to Credit**
 - Collateral ?
 - Unique Identifier
- 73% Potential
Banking Market
does not have
access to Banking
Products in
Pakistan***

Vertical Market Linkages

Milk Production, Productivity & Per Capita Availability

Pakistan (Economic Surveys 2005, 2010, 2015)

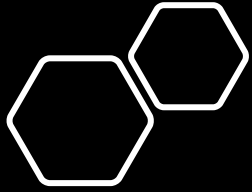
Dairy Population Cattle + Buffalo (Millions) Economic Surveys		Dairy in Lactation (Millions)		Milk Production (Billions Lit.)	Human Population (Millions)	Lit/ Yr available for humans @ 63% of total Produced	Per day availability to Humans (Lit) @ 63% of produced by subtracting 37% for calf on the analogy of Pb Liv. Census 2018	Productivity Average/ Dairy animal/day (Lit)
2005	56.8	25.3	14	38.37	156	155	0.424	6 (1516/ Yr)
2010	67.3	30	16.5	44.82	177	159	0.437	5.9 (1494/ Yr)
2015	76.8	30	16.5	50.88	191	167	0.459	6.8 (1696/ Yr)
		Punjab @ 44.5% Pb Liv. Cen. 2018 analogy	For Punjab taken as 55% for Buffalo & Cattle -of national herd-averaged out	28	10.5	168	0.460	

Variable calculated as per production Figures in Economic surveys

Punjab (Livestock Census, 2006, Agri. Census 2010, Livestock real time/ door to door Census 2018)

2006 (Liv. Cen)	29	12.9	17.73	87.5	128	0.349	5.5 (1375/ Yr)
2010 (Agri. Cen.)	28.9	12.86	17.68	93.6	119	0.326	5.5 (1375/ Yr)
2018 Livestock Cen. (9211)	Actual 29	12.9 (44.5% of herd)	17.73	110	101	0.278	5.5 (1375/ Yr)

weighted average after rounding up for both buffalo & cattle @ 5.5 Lit./ animal as per Pb. Liv. Cen. 2018



“Poor are stunted...rich are stunted, too!”

World Bank Report on Stunted Growth in Children 2016



مرل

نکھو دھیر

یھو گوال

تو ابتر سجد

باغبان پورہ

خزانہ

بیچ پورہ

ایچنٹا

ساعتواڑی

کوئی عبدالرحمن

دیوی پورہ

شاہی پورہ

پورہ نمین

پاٹو

گنجد سندھو

ماریوی پورہ

سلامت پورہ

فتح گر گڑھ

پنجا گڑھ

نت

ریاں

Harbans Pura

تاج پورہ

چک رام پورہ

کوٹلی

سوک و دھاوا

رکھ جیسین

تلس پورہ

اتو کے اعوان

پورہ جاکے

مناواں

ن پورہ

پھرہ

رکھہ

لاہور چھاوتی

سٹ

سٹ

رکھ تھو

پورہ

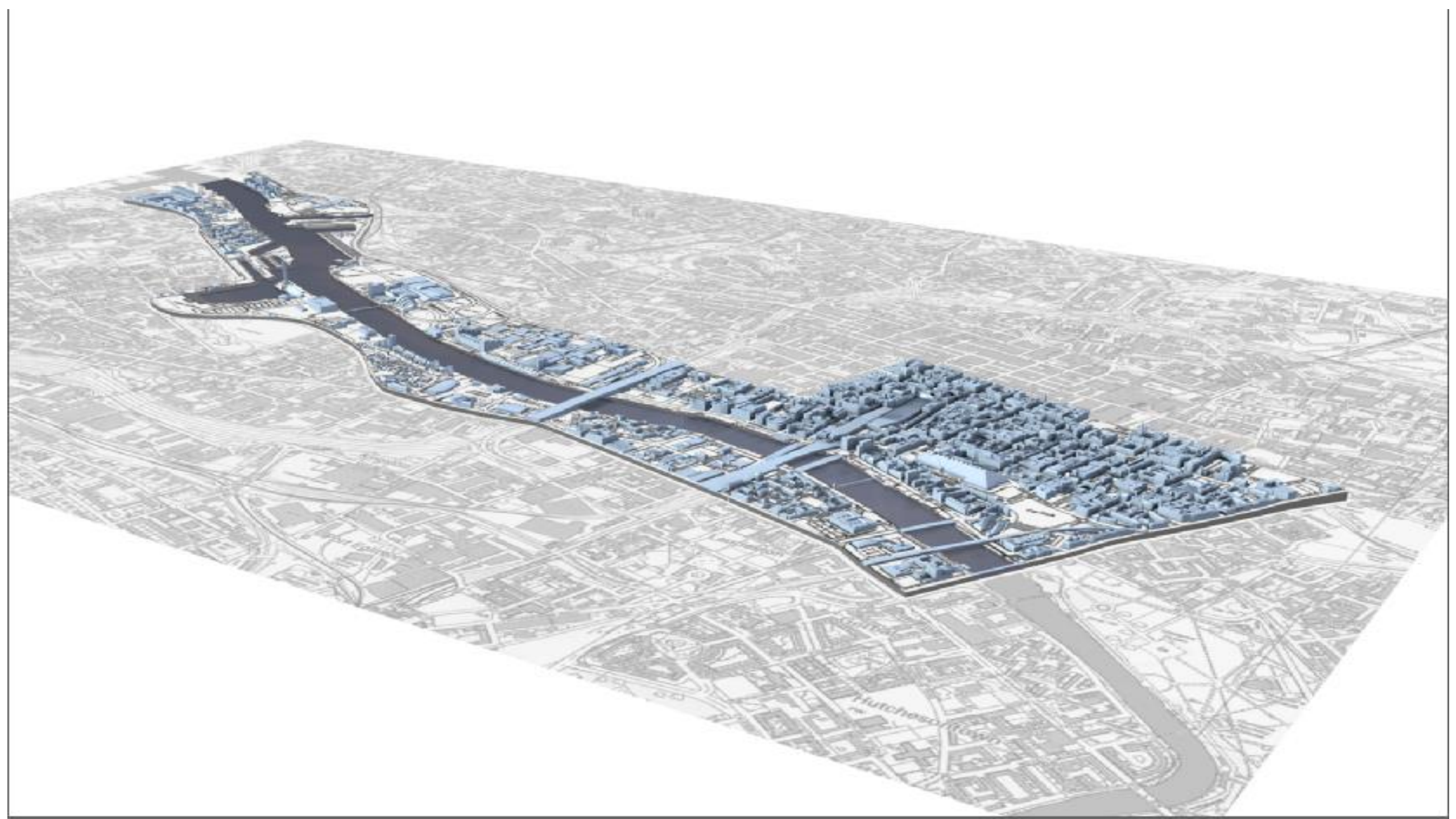
رحمان پورہ

منڈیا تووالہ

پھرون

توڈ گراں

ملک پورہ



**Khasra
No.?**

**Survey
No.**



Latha Parcha/ Cadaster/ Masavi

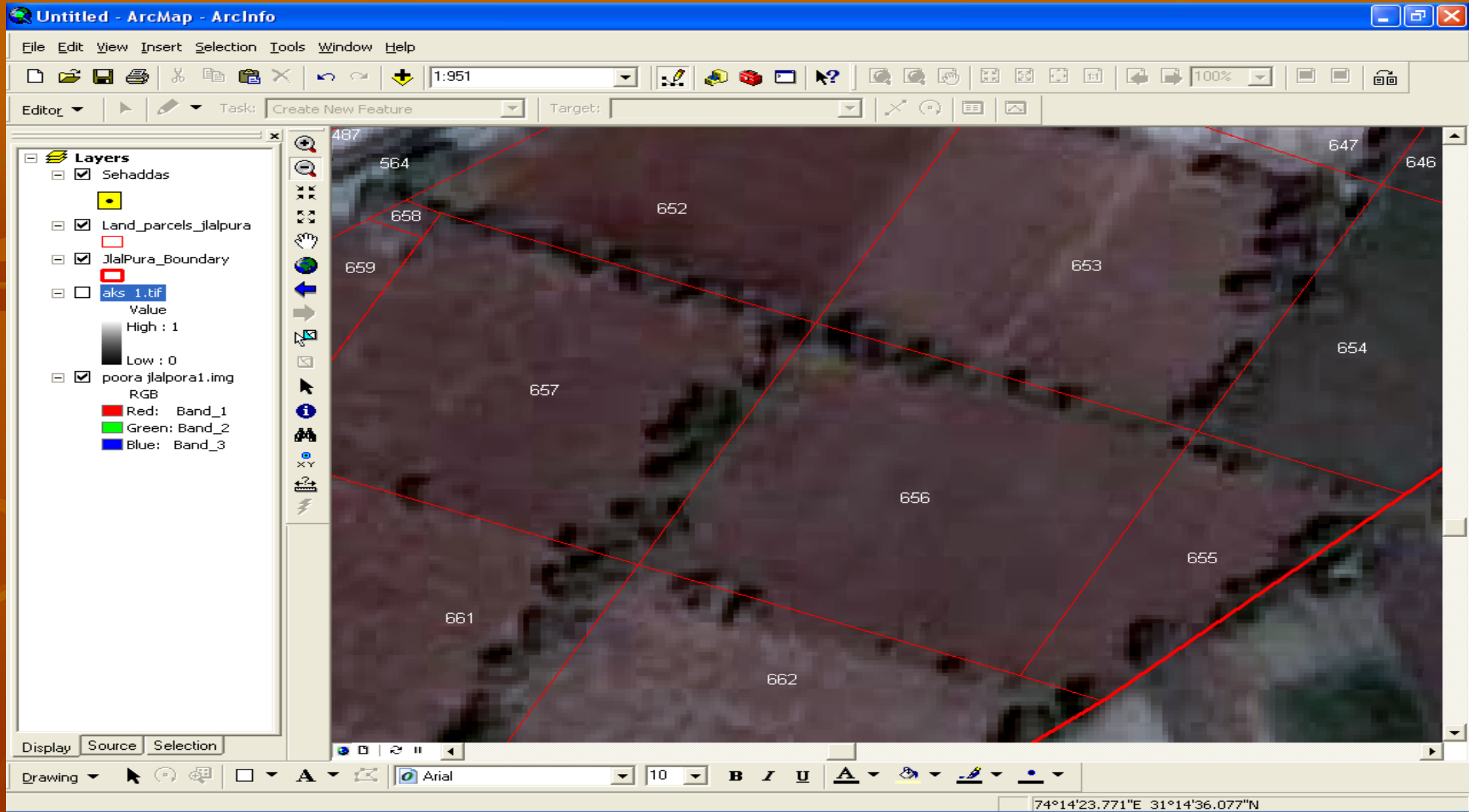
- JlalPura_Boundary
- Land_parcel_jlalpura
- aks 1.tif
Value
High : 1
Low : 0
- poorajlalpora1.img
RGB
Red: Band_1
Green: Band_2
Blue: Band_3



Layers

- Sehadass
- ROADS
- JlalPura_Boundary
- Land_parcels_jlalpura
- aks 1.tif
 - Value
 - High : 1
 - Low : 0
- poora jlalpora1.img
 - RGB
 - Red: Band_1
 - Green: Band_2
 - Blue: Band_3

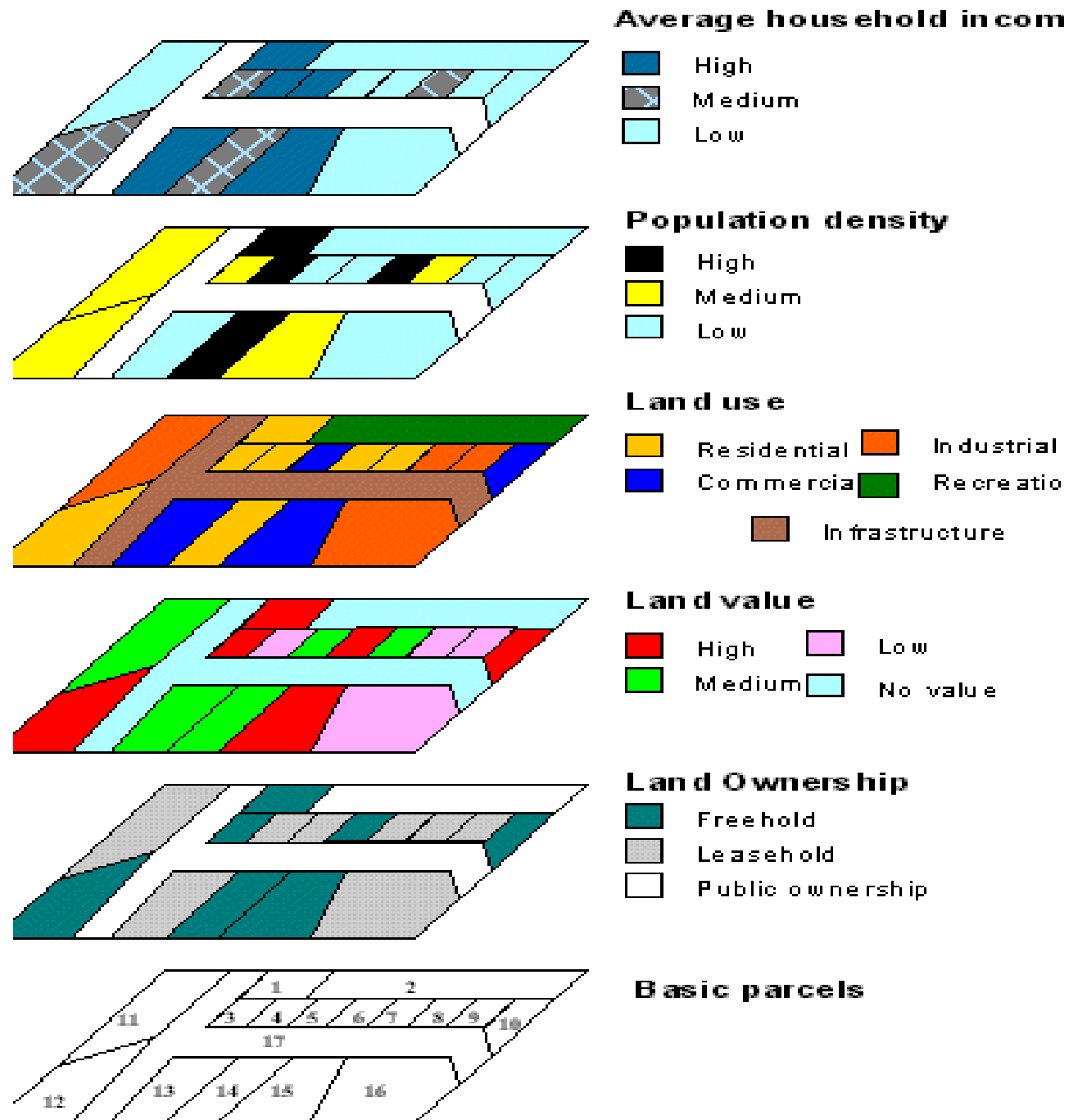


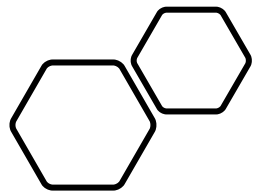




Geographical Integration System (GIS)

*Whither Spatial Data
Infrastructure (SDI)?*





Punjab
Revenue
Academy
achievements
since
January 2022



Patwaris syllabus revamped- ICT, professional ethics etc. included

20 Training modules prepared

Examination system overhauled

Retired Experienced highly skilled Revenue Field staff identified, assessed, selected, notified, trained as master trainers (142)

Training since 15.02.2022 going on of 4850 newly recruited Patwaris across 142 Tehsils of the Punjab Province *(total 9 Month duration)*



WEBSITE
FUNCTIONAL



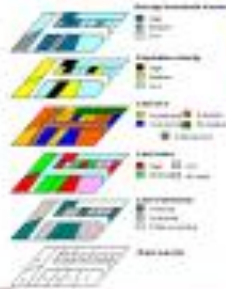
24/ 7 CONTACT
CENTRE &
CONTENT
MANAGEMENT
SERVICES UP &
RUNNING



RESEARCH &
DEVELOPMENT
WING
FUNCTIONAL



AGREEMENTS SIGNED
WITH
*UNIVERSITY OF
MANAGEMENT &
TECHNOLOGY LAHORE,
CIVIL SERVICES ACADEMY
(PAS) CAMPUS, LAHORE, &
SHAHID JAVED BURKI
INSTITUTE OF PUBLIC
POLICY AT NETSOLE*



www.pra-borpunjab.gov.pk



Bilingual Website





























What else is required?

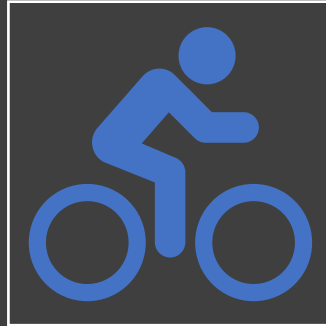


Both Static & Mobile GIS Labs

Training of entire Eco-system of BOR
(*remaining Fifteen Thousand HR of BOR, PLRA, etc.*) on line with new systems
adoptions like Dehi Markaz Maal, Digitization,
Provision of services at village level, building
statistical capacity (Lal kitab, digital girdawri)
etc. – new set of initiatives & associated
reforms



One static GIS Lab
required at Punjab
Revenue Academy for
100 trainees



9 Mobile GIS Labs
required- one for each
of 9 Divisions in the
Punjab Province



One public policy lab
required for continuous
research, data analyses,
research, & training re-
cycling